

Kollektion Miyaki

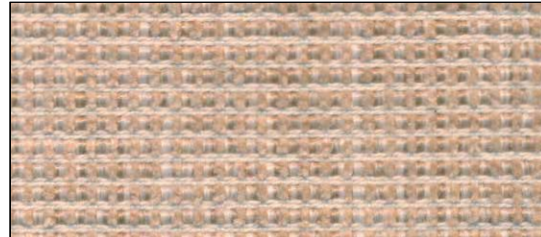
Stoffkategorie C

Breite 140 cm
Gewicht 728 gr / mtl.
Komposition 51% CO, 25% VI, 21% PP, 3% PA
Martindale 30.000

(1/2)



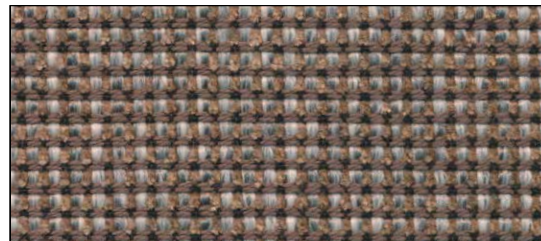
Miyaki 01 Bianco



Miyaki 2/1 Lino



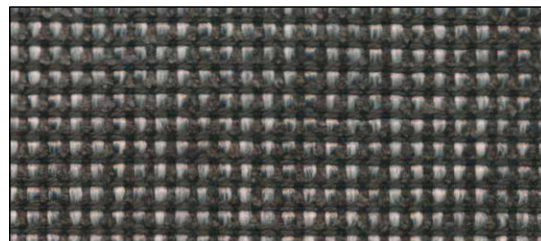
Miyaki 06 Arancione



Miyaki 09 Cappuccino



Miyaki 9/2 Argento



Miyaki 9/3 Antracite



Miyaki 9/4 Nero-Bianco



Miyaki 10/1 Bluet



Miyaki 12/1 Viola



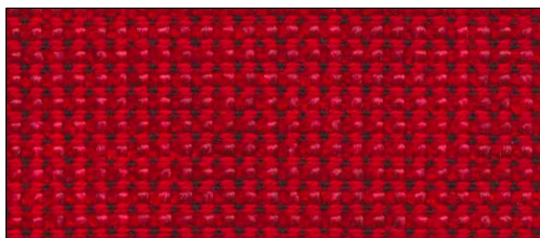
Miyaki 12/3 Marrone due

Kollektion Miyaki

Stoffkategorie C

Breite 140 cm
Gewicht 728 gr / mtl.
Komposition 51% CO, 25% VI, 21% PP, 3% PA
Martindale 30.000

(2/2)



Miyaki 18/1 Rosso



Miyaki 20 Verde

Kollektion Zen

Stoffkategorie D

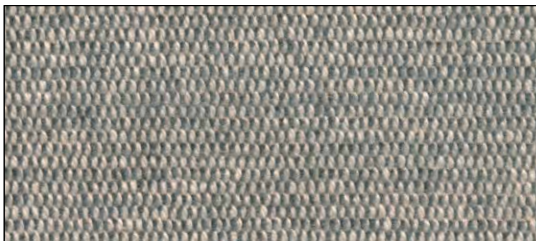
Breite 140 cm
Gewicht 733 gr / mtl.
Komposition 70% CO, 30% VI
Martindale 35.000



Zen 1/2 Leinen



Zen 1/3 Schwarzweiss



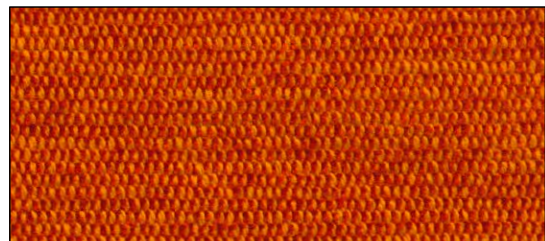
Zen 1/4 Silber



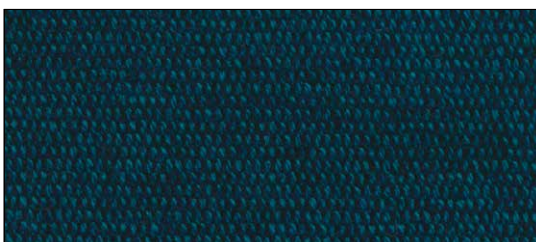
Zen 12 Nougat



Zen 13 Schwarz



Zen 15 Orange



Zen 16 Deep Peacock

Kollektion Darwin

Stoffkategorie E

Breite 140 cm
Gewicht 794 gr / mtl.
Komposition 58% VI, 31% CO, 11% LI
Martindale 40.000

(1/2)



Darwin 02 Beige



Darwin 09 Creme



Darwin 18 Lichtgrün



Darwin 23 Schwarz



Darwin 26 Steingrau



Darwin 112 Rot



Darwin 143 Goldgelb



Darwin 148 Orange



Darwin 150 Grau



Darwin 1413 Senfgelb

Kollektion Darwin

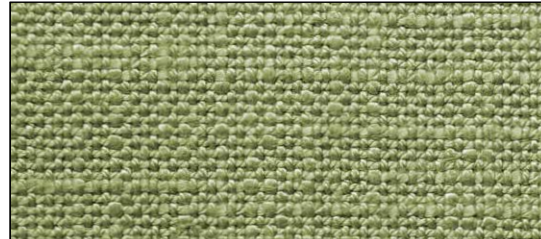
Stoffkategorie E

Breite 140 cm
Gewicht 794 gr / mtl.
Komposition 58% VI, 31% CO, 11% LI
Martindale 40.000

(2/2)



Darwin 1633 Blau



Darwin M816 Grün

Kollektion Pamir

Stoffkategorie Extra

Breite 140 cm

Gewicht 882 gr / mtl.

Komposition 38 % CO, 38% PC, 16% PL, 6% WO, 2% VI

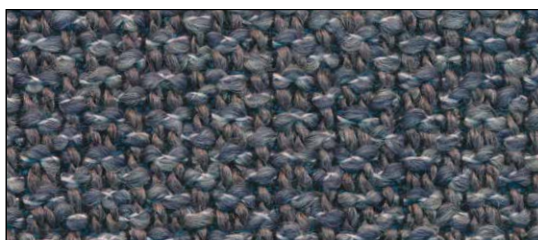
Martindale 88.000



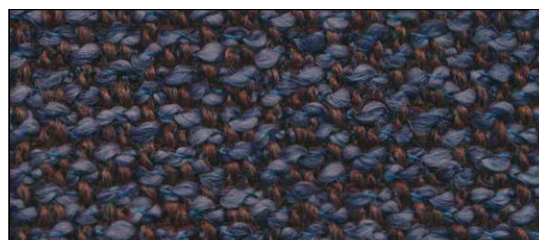
Pamir 01 Kalk



Pamir 3/1 Leinengrau



Pamir 10/1 Silberblau



Pamir 11/3 Blaubraun



Pamir 18 Rot

Kollektion East

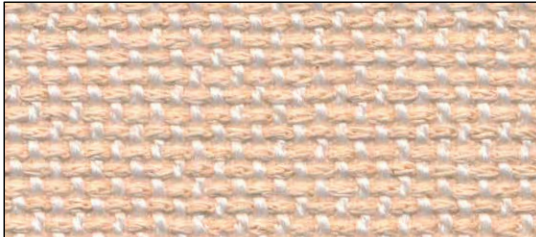
Stoffkategorie Extra

Breite 140 cm

Gewicht 790 gr / mtl.

Komposition 46 % CO, 20% PC, 17% PL, 8% VI, 6% WO, 3% PA

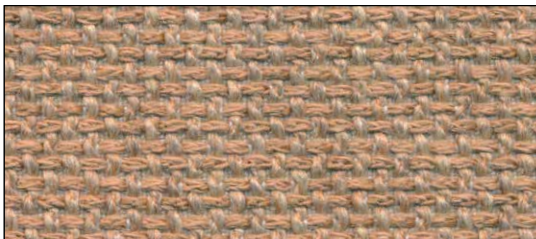
Martindale 35.000



East 1/1 Vanilla



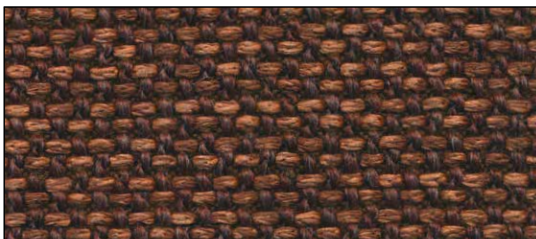
East 03 Silver



East 4/3 Driftwood



East 10 Grey



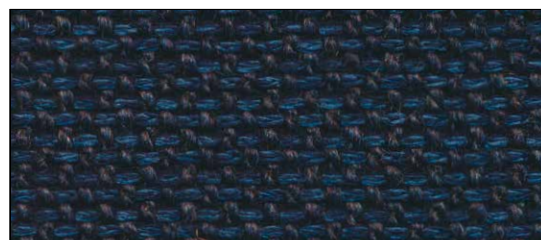
East 11/1 Havanna



East 13 Antracite



East 14/1 Black



East 14/2 Navy



East 18 Cherry

Kollektion Lia

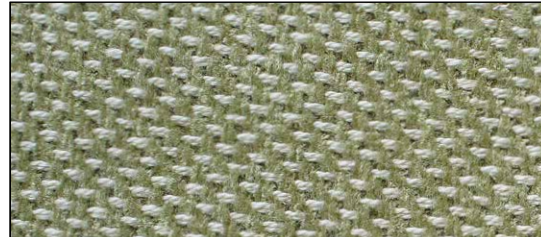
Stoffkategorie Super

Breite 140 cm
Gewicht 792 gr / mtl.
Komposition 56 % CO, 34% VI, 10% PL
Martindale 30.000

(1/2)



Lia 1/2 Braun



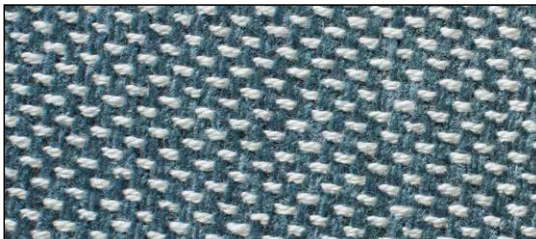
Lia 1/3 Lime



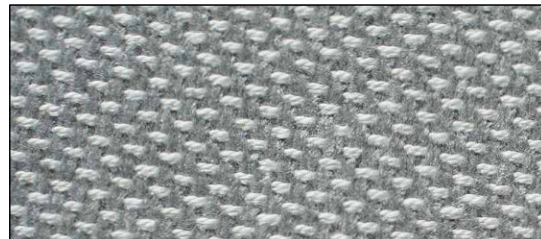
Lia 1/4 Gelb



Lia 1/6 Rot



Lia 1/8 Graublau



Lia 1/10 Silber



Lia 2/1 Beige



Lia 2/2 Rosa



Lia 3/1 Cyan



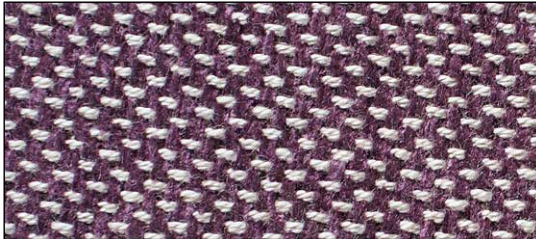
Lia 3/2 Blau

Kollektion Lia

Stoffkategorie Super

Breite 140 cm
Gewicht 792 gr / mtl.
Komposition 56 % CO, 34% VI, 10% PL
Martindale 30.000

(2/2)



Lia 3/3 Violett



Lia 3/4 Grün



Lia 04 Schwarz



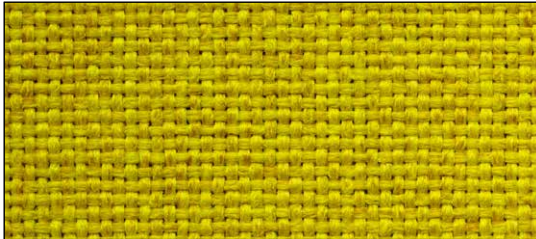
Lia 4/1 Royalblau

Kollektion Sole

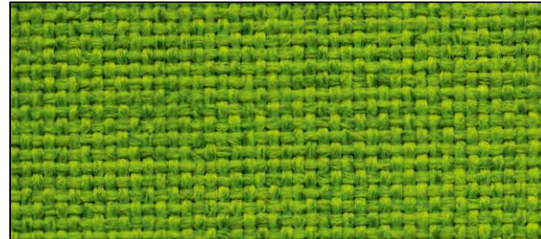
Stoffkategorie Super

Breite 140 cm
Gewicht 735 gr / mtl.
Komposition 100% TREVIRA CS
Martindale 50.000

(1/2)



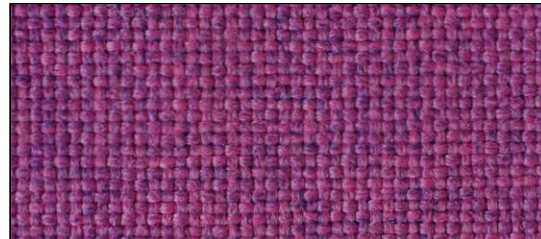
Sole 07 Gelb



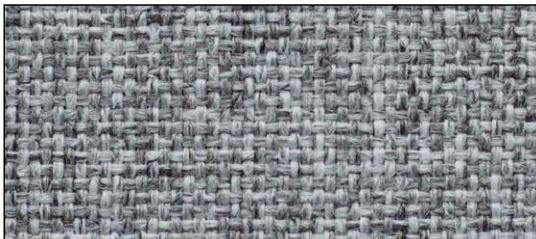
Sole 10 Hellgrün



Sole 14 Rot



Sole 19 Rosé



Sole 400 Silber



Sole 405 Orange



Sole 409 Bordeaux



Sole 410 Grün



Sole 413 Blau



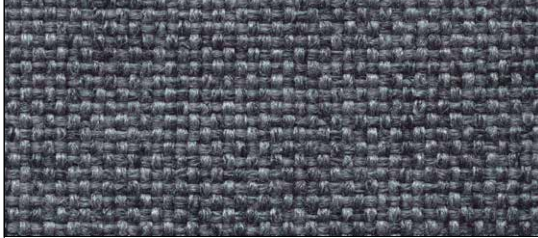
Sole 415 Lila

Kollektion Sole

Stoffkategorie Super

Breite 140 cm
Gewicht 735 gr / mtl.
Komposition 100% TREVIRA CS
Martindale 50.000

(2/2)



Sole 417 Grau



Sole 422 Petrol



Sole 442 Hellgrau

Kollektion Plain

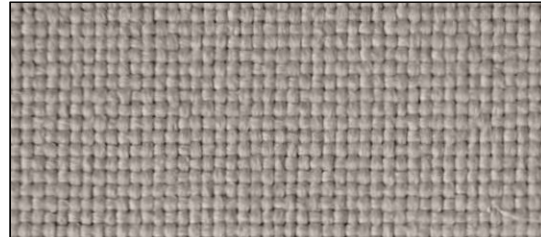
Stoffkategorie Super

Breite 140 cm
Gewicht 735 gr / mtl.
Komposition 100% TREVIRA CS
Martindale 50.000

(1/2)



Plain 04 Hellbeige



Plain 05 Beige



Plain 08 Anthrazit



Plain 09 Dunkelviolett



Plain 11 Bordeaux



Plain 12 Rot



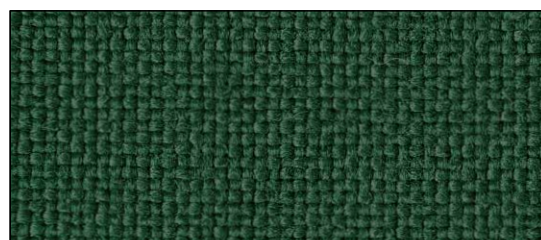
Plain 17 Gelb



Plain 19 Lime



Plain 21 Waldgrün



Plain 22 Dunkelgrün

Kollektion Plain

Stoffkategorie Super

Breite 140 cm
Gewicht 735 gr / mtl.
Komposition 100% TREVIRA CS
Martindale 50.000

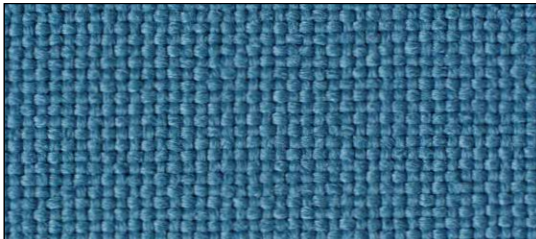
(2/2)



Plain 24 Türkis



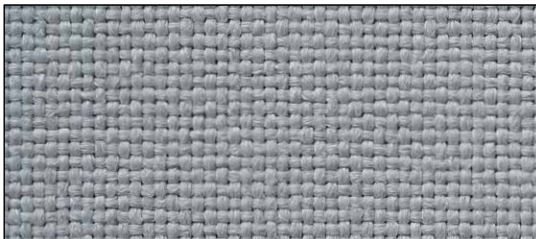
Plain 25 Cyan



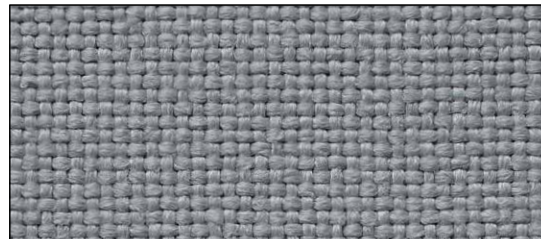
Plain 26 Petrol



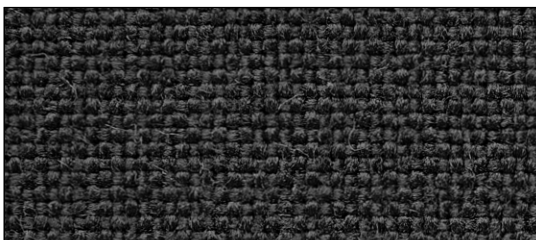
Plain 30 Lila



Plain 34 Hellgrau



Plain 35 Silber

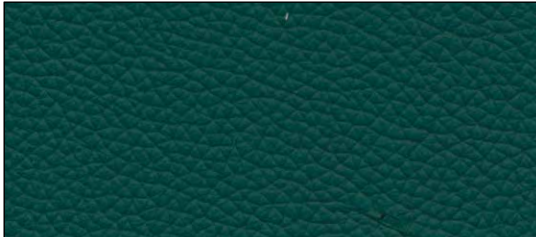


Plain 37 Schwarz

Kollektion Leder

Italienisches Rindsleder
Lederstärke 1.0 - 1.2 mm
Anilin durchgefärbt
Chromfreie Gerbung

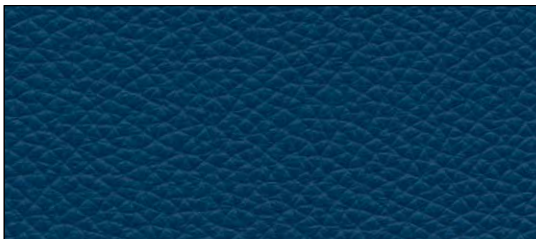
(1/2)



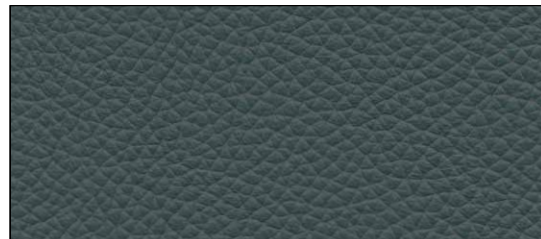
Panama 5150 Verde



Panama 5200 Rosso



Panama 5250 Oceano



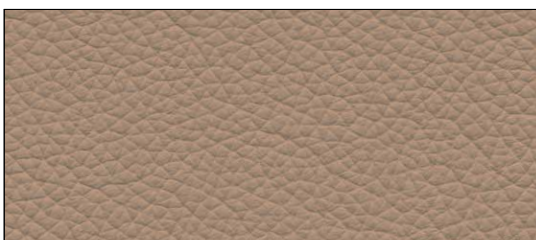
Panama 5290 Asfalto



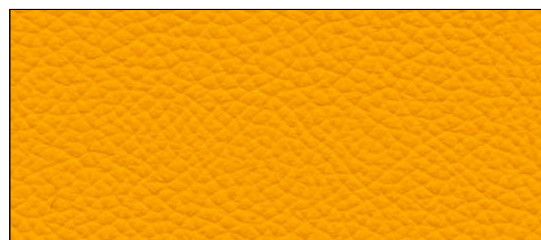
Panama 5300 Nero



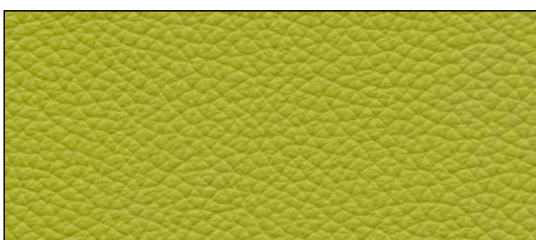
Panama 5310 Grigio



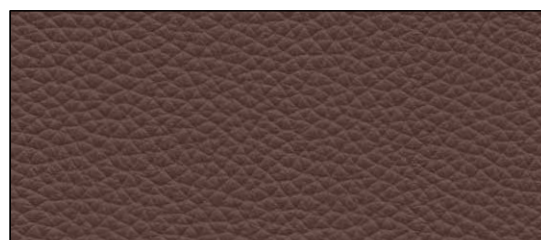
Panama 5320 Dove



Panama 5340 Giallo



Panama 5390 Mela



Panama 5400 Marrone

Kollektion Leder

Italienisches Rindsleder
Lederstärke 1.0 - 1.2 mm
Anilin durchgefärbt
Chromfreie Gerbung

(2/2)



Panama 5480 Ghiaccio



Panama 5500 Cuoio